



# New Reception Parents' Meeting

July 2020



# Our School Mission Statement



In following the Gospel values of Jesus, we are called to love, to learn and to respect one another.



Lord, fill our hearts and guide our minds as we move forward together.

Enable us to work with one another to ensure that our community continues to develop and grow, for the benefit of all.

Amen.

# Impact due to Covid 19

- At the present time we simply do not know what school will look like in September
- The following information is based on normal Reception intake
- We will keep you updated when further Public Health and Government advice has been released
- We ask all parents to contact the school office to provide us with an email address so that further information can be sent this term and if necessary during the summer holidays

# Introductions

- Mr Carry – Principal
- Mrs McCole – Vice Principal
- Mrs Price – Chair of St Joseph's Academy Committee
- Mrs Piercy and Mrs Dodd – Reception Class teachers
- Mrs Riley – Key Stage 1 and EYFS lead
- Mrs McCole – SEND Coordinator
- Mrs Faux-Conduit – School Admin. Manager
- Mrs Parveen – Extra Club Manager
- Mrs Brown/Mrs Cartwright and Mrs Stevens – Dudley Catering –  
Cooks and Catering Assistant
- Mr Lawson - Chair of St. Joseph's PTA

# About St Joseph's

- Currently 207 pupils on roll
- One form entry (one class per year group)
- 93% of pupils are Catholic
- Converted to a Multi Academy Company on 1<sup>st</sup> October 2014
- St Nicholas Owen Catholic Multi Academy Company (SNOMAC)
- Everything we do is underpinned by the Gospel values and Catholic virtues which are rooted from The Beatitudes – Christ-centred

# Catholic Schools Pupil Profile

- Since September 2015 all Catholic schools across the Archdiocese of Birmingham have followed the 'Catholic Schools Pupil Profile'
- This has been adapted from the Jesuit Institute Virtues formulated originally by Fr. Adrian Porter
- This consists of a series of 'Character Virtues' (16 in total) which will help to develop every child to live a happy and virtuous life providing them with skills for living and skills for learning
- Each half term focuses on two virtues. This cycle will then continue so that the same virtues are not associated with a particular time of the year. Currently we are exploring the virtues of being 'learned and wise'
- Catholic school clusters met together to discuss ideas on ways in which these virtues can be incorporated into Collective Worship, the Catholic Life of the School and within RE lessons
- These virtues form the basis of all teaching within the school and inform parents how we intend to develop the whole-child

# Catholic Schools Pupil Profile

- Grateful and Generous
- Attentive and Discerning
- Compassionate and Loving
- Faith-filled and Hopeful
- Eloquent and Truthful
- Learned and Wise
- Curious and Active
- Intentional and Prophetic



loving  
hopeful  
attentive  
learned  
curious  
faith-filled  
wise  
generous  
learned  
grateful  
eloquent  
prophetic  
discerning  
intentional  
compassionate  
truthful  
active



# The Development of the Whole Child

- Catholic schools retain a unique identity
- Spiritual, Moral, Social, Vocational and Cultural Development (SMVSC) of every child
- Gospel values (The Beatitudes)
- Catholic Schools Pupil Profile (Catholic virtues)
- Curriculum – broad and balanced with enriched learning opportunities
- Extra curricular – extension/enrichment of learning – arts, sport music etc.
- Support for children with different needs – SEND, emotional and social, behavioural etc.

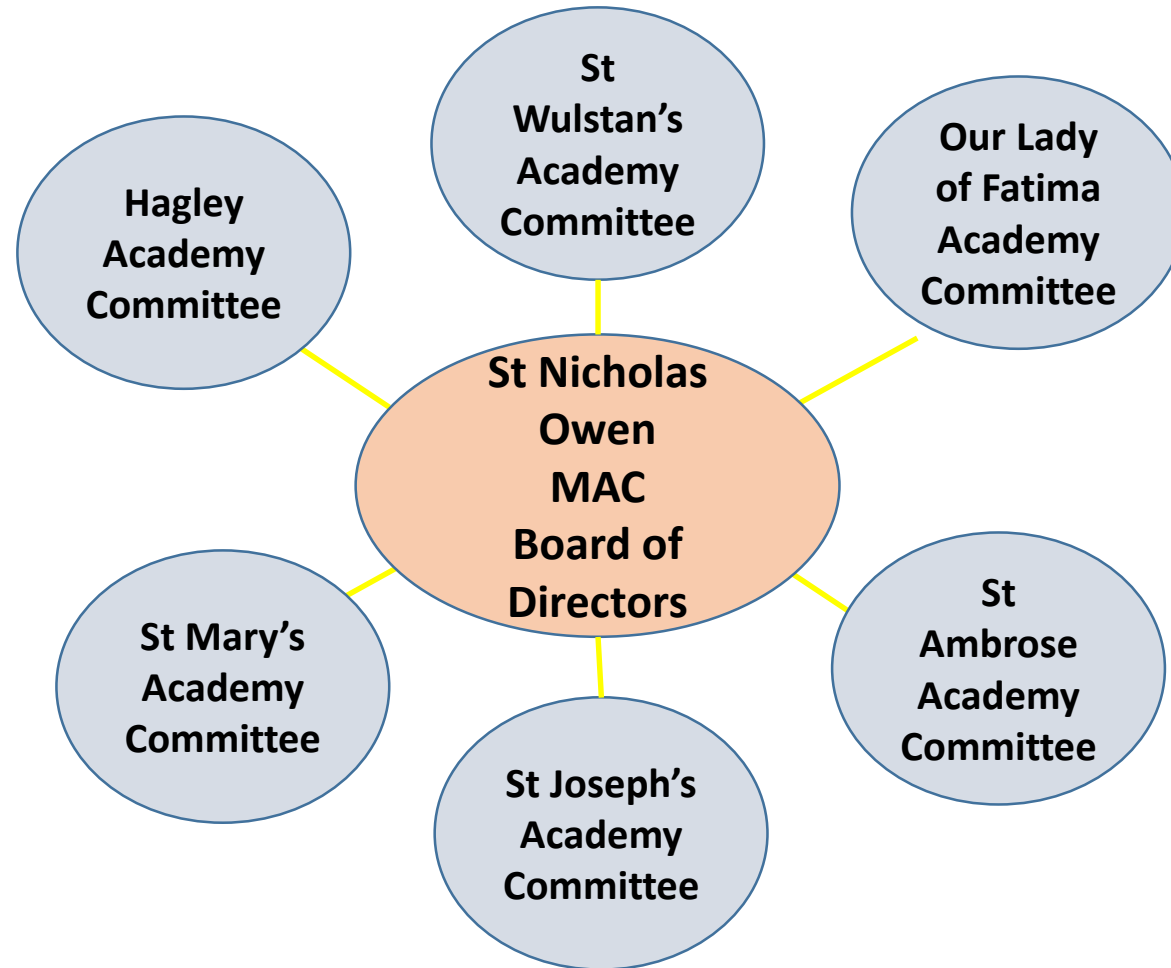
# Leadership and Management

- St Joseph's Senior Leadership Team (Principal, Vice Principal and Key Stage Leads)
- St Joseph's Academy Committee (12 members – two staff and two parent representatives plus eight foundation members including the Principal)
- St Nicholas Owen Multi Academy Company (MAC) Board of Directors (14 members – two staff and two parent directors plus eight foundation directors)

# What is a MAC?

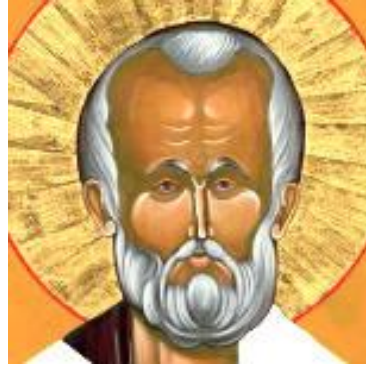
- A Multi Academy Company (MAC) is a family of Catholic schools who are committed to working together
- All MACs in our Diocese work under the 'umbrella' of the Dominic Barberi Trust
- All schools in our MAC have their own distinctive Catholic identity

A group of Catholic schools each with Academy status,  
independent of the Local Authority,  
with one Board of Directors and one Committee of Principals  
but each with its own Academy Committee





# The St. Nicholas Owen Multi-Academy Company



**Saint Nicholas Owen** (died 1606) was a Jesuit lay brother who built numerous priest holes during the reign of Queen Elizabeth I of England.

Some of these priest holes are at Harvington Hall.

Saint Nicholas Owen is honoured as a martyr by the Catholic Church and was canonized by Pope Paul VI in 1970.

# Why be in a MAC?

- To ensure the continuation of Catholic education
- To work together to create the best possible learning environments for our children
- To share expertise, ideas and skills
- To create diverse opportunities for our children



# Merger with St. Nicholas Owen and St. Catherine of Sienna Multi Academy Companies



- On 12<sup>th</sup> June 2020, parents were informed of the merger between the two academy companies, to be known as 'Emmaus'
- This process will take place over the next twelve months
- Offers exciting opportunities for all involved as the growth of the MAC develops

# Being a Catholic School

- Assist the Church, support parents and the community
- Daily acts of Collective Worship – class, key stage, whole-school, meditation etc.
- Catholic Life – Masses (class, key stage, whole-school) held at school and at Our Lady and All Saints Church, implementation of the Gospel values and virtues
- Charitable outreach – Father Hudson’s Society, CAFOD, UNICEF etc.
- Strong links between the School and Parish
- Sacramental programme – Year 3 (Reconciliation and First Holy Communion) and Year 6 (Confirmation)
- Religious Education – follow Diocesan programme – Learning and Growing as People of God

# Well Done!

- Parents are the primary educators of their children
- Catholic schools are in place to support parents in educating their children, assisting the Church in making Christ known to others etc.
- Early parental engagement is key to child development
- The Education Endowment Foundation (EEF) is an independent grant-making charity dedicated to breaking the link between family income and educational achievement, ensuring that children from all backgrounds can fulfil their potential and make the most of their talents
- The EEF has highlighted the importance of parents reading to their children before they can read and with them when they are able to. Talking to children also has a positive impact on child development. Parental engagement can contribute to up to 5 months additional progress in learning over a year
- As a Catholic school our aim is to ensure that every child, made in the image and likeness of God, is given the opportunities to develop (in all aspects) to their God-given potential

# Reception Baseline Assessment

- The existing end of Key Stage 1 (KS1) tests will become non-statutory and are to be abolished when the new Reception baseline becomes established (2022-23 academic year the earliest)
- Due to the impact of Covid 19 the Reception baseline assessment which was due to be implemented from Autumn 2020 has now been postponed until 2021
- At the end of the year the children are assessed whether they have achieved a Good Level of Development (GLD). The teacher, through ongoing assessment, will judge whether a child has achieved at least the 'expected' level in the three 'Prime' areas of the Early Learning Goals (ELGs - Communication and Language, Physical Development and Personal, Social and Emotional Development) plus Literacy and Mathematics (12 ELGs)

# Reception Learning Environment

- Reception is a play-based environment, we aim to engage the children in activities which will support the prime and specific areas of learning
- Initially we focus upon the children's personal, social and emotional development, believing that once children become relaxed and confident within the classroom they will become active learners

# Reception Areas of Learning

- On entry to reception, the teachers and the support staff will aim to ensure the children become familiar with the daily routines. It is important that the children enjoy coming into school each day, feeling confident and relaxed
- The environment we provide aims to support the 'Characteristics of Effective Learning'
  1. Playing and exploring
  2. Active learning
  3. Creating and thinking critically
- The Prime Areas of learning are fundamental to support learning across our curriculum:
  - Personal, social and emotional development
  - Communication and language
  - Physical development

# Reception Areas of Learning

- The Specific Areas include essential skills and knowledge, children will develop and progress in these areas through adult led teaching and child initiated activities will give them the opportunity to apply and consolidate their learning.
- Literacy
- Mathematics
- Understanding the world
- Expressive arts and design

# Assessing Pupil Progress

## Target Tracker (online data tracking system)

- Throughout Reception we using a tracking system to assess children's progress in all of the areas of learning. This allows us to identify where further support is required to ensure children continue to gain confidence across the curriculum

## Routine

- The structure of our day will change throughout the year. Initially the environment will be more child-initiated to support the development of the characteristics of effective learning. However, as children become secure in the underpinning skills, their learning will become more adult-led, particularly in the latter part of the year to ensure children are prepared for their transition into Year 1



# Transition to Reception

Preparing for Reception:

- Label all clothes
- Return consent forms (including new GDPR consent)
- Ensure in September that we have your latest contact information
- Purchase a book bag
- All stationery will be provided in class
- Send a named water bottle to school each day
- All children will have a free school meal
- 'I am starting School' books
- Treasure box
- Self care

# Initial Transition to Reception

*This is subject to any Public Health and Government updates due to Covid 19*

- Tuesday 1<sup>st</sup> and Wednesday 2<sup>nd</sup> September – School INSET days (closed for all pupils)
- Thursday 3<sup>rd</sup> and Friday 4<sup>th</sup> September – transition meetings with parents (this may be undertaken remotely)
- w/c Monday 7<sup>th</sup> September- half day sessions for children (morning – 9am-11.15am and afternoon 12.45pm-3pm)
- Friday 18<sup>th</sup> September –first ‘full day’ with lunch
- w/c Monday 21<sup>st</sup> September – Reception children in full time (8.45am until 3.10pm)
- Usual morning routine- Children enter the school gates by the Reception outdoor area at 8.45am. A member of staff will be allocated on the door if there are any messages that you need to pass onto the class teacher
- Usual afternoon routine – children are collected from gates by Reception outdoor area at 3.10pm



# Phonics

- In Reception and KS1 we use the Read Write Inc. phonics programme
- This is a complete literacy programme - systematic and structured
- This programme meets the demands of the new national curriculum, giving your children the best chance of success in the national tests
- The option of one-to-one tutoring is available so no child is left behind
- Storybooks align with the sounds learnt in class
- We will hold a phonics meeting in the first half term to explain the programme fully including ways to support your child at home
- Key information is available on our website

# Wraparound Childcare

- The DfE have highlighted the importance of schools in supporting parents with additional childcare outside normal school hours
- Wraparound childcare refers to before school childcare (breakfast club) and after school childcare (after school club)
- *The Parents' views and experiences of childcare* survey reported that 62% of parents of children aged 5+ require some form of wraparound care.
- In addition to this, 3 out of 10 parents were unable to find the wraparound care required
- Mrs Naheed Parveen is the manager of the 'Extra Club' which provides before school care (from 8am) and after school care (up to 6pm) Monday to Friday.
- The provision offered may be subject to change due to Public Health and Government guidance

# Out of School Hours Provision

- There are a range of before school, lunchtime and after school activities for the children on offer at St. Joseph's
- Sport provision includes multi-skills clubs (two mornings per week), gymnastics clubs (two mornings per week), netball, Irish dancing, cricket, football, martial arts, cross country, volleyball and tag rugby
- Generally these are open to pupils from Year 1 upwards
- During the course of the year there are other clubs organised with external providers including a Science Club.
- Mrs Cangiano organises the music and arts provision across the school. This includes a KS2 Choir (30-40 children) who have performed at the Young Voices Concert. Mrs Piercy leads the children in KS1 choir
- The DPA lead whole class musical instrument lessons (Year 3 recorders and Year 5 guitars) as well as and peripatetic sessions for children who wish to play an instrument (KS2).



# **DUDLEY FAMILY INFORMATION SERVICE**

- Ben Diaper – Information Officer & Local Contact for DFIS

# DUDLEY FAMILY INFORMATION SERVICE

- Dudley Family Information Service is a **FREE** service that provides information, advice and contacts for all families with children and young people aged 0-20yrs across the Borough and for families with children and young people 0-25yrs who have a special educational need or a disability. We also provide information and advice to childcare providers and for other professionals supporting families. Information provided includes:
  - Childcare
  - Events & Leisure
  - Early Help Support & Advice
  - Local Offer
- All advice and information given by the FIS team is free and confidential. Our helpline is open Monday to Friday, 9am – 5pm; there is a 24 hour answer phone service. You can also view our website: <http://fis.dudley.gov.uk/FSD/>

# Any Questions?

Please email [info@st-jo-st.dudley.sch.uk](mailto:info@st-jo-st.dudley.sch.uk)

